

8.01. Rohr AISI 304/304L

8.01. труба AISI 304/304L

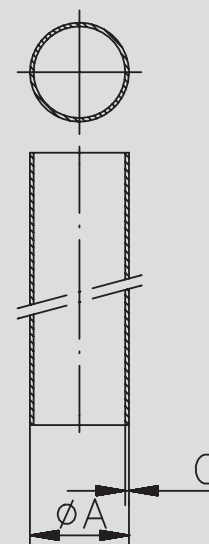
Art.-Nr. 800-

AISI 304/304L-1.4301/1.4307

DN	A mm	B mm	C mm	D mm	E mm	Gew. kg/m	Art.-Nr.	Preis	Art.-Nr.	Preis	Art.-Nr.	Preis	Art.-Nr.	Preis
							CC	EUR	CD	EUR	BC	EUR	BD	EUR
15	18,0	1,50				0,620	-101801502		-201801502		-301801502		-401801502	
15	19,0	1,50				0,657	-101901502		-201901502		-301901502		-401901502	
20	22,0	1,00				0,526	-102201002		-202201002		-302201002		-402201002	
20	22,0	1,50				0,770	-102201502		-202201502		-302201502		-402201502	
20	23,0	1,50				0,808	-102301502		-202301502		-302301502		-402301502	
1"	25,4	1,20				0,727	-102541202		-202541202		-302541202		-402541202	
1"	25,4	1,50				0,898	-102541502		-202541502		-302541502		-402541502	
25	28,0	1,00				0,676	-102801002		-202801002		-302801002		-402801002	
25	28,0	1,50				0,995	-102801502		-202801502		-302801502		-402801502	
25	29,0	1,50				1,033	-102901502		-202901502		-302901502		-402901502	
1,25"	31,8	1,25				0,956	-103181252		-203181252		-303181252		-403181252	
1,25"	31,8	1,50				1,138	-103181502		-203181502		-303181502		-403181502	
32	34,0	1,00				0,826	-103401002		-203401002		-303401002		-403401002	
32	34,0	1,50				1,221	-103401502		-203401502		-303401502		-403401502	
32	35,0	1,50				1,258	-103501502		-203501502		-303501502		-403501502	
1,5"	38,1	1,25				1,153	-103811252		-203811252		-303811252		-403811252	
1,5"	38,1	1,50				1,375	-103811502		-203811502		-303811502		-403811502	
40	40,0	1,00				0,977	-104001002		-204001002		-304001002		-404001002	
40	40,0	1,50				1,446	-104001502		-204001502		-304001502		-404001502	
40	41,0	1,50				1,484	-104101502		-204101502		-304101502		-404101502	
2"	50,8	1,25				1,551	-105081252		-205081252		-305081252		-405081252	
2"	50,8	1,50				1,852	-105081502		-205081502		-305081502		-405081502	
50	52,0	1,00				1,277	-105201002		-205201002		-305201002		-405201002	
50	52,0	1,50				1,897	-105201502		-205201502		-305201502		-405201502	
50	53,0	1,50				1,934	-105301502		-205301502		-305301502		-405301502	
2,5"	63,5	1,50				2,329	-106351502		-206351502		-306351502		-406351502	
65	70,0	2,00				3,405	-107002002		-207002002		-307002002		-407002002	
3"	76,1	1,50				2,984	-107611502		-207611502		-307611502		-407611502	
3"	76,1	2,00				3,711	-107612002		-207612002		-307612002		-407612002	
80	85,0	2,00				4,157	-108502002		-208502002		-308502002		-408502002	
4"	101,6	1,50				3,760	-110161502		-210161502		-310161502		-410161502	
4"	101,6	2,00				4,988	-110162002		-210162002		-310162002		-410162002	
100	104,0	2,00				5,108	-110402002		-210402002		-310402002		-410402002	
125	129,0	2,00				6,360	-112902002		-212902002		-312902002		-412902002	
150	154,0	2,00				7,612	-115402002		-215402002		-315402002		-415402002	

Getränkeleitungsrohr
DIN 11850 und Zoll

пищевая нержавеющая труба DIN 11850 и дюйм



CC: ungeglüht matt - CD: ungeglüht geschliffen - BC: geglüht matt - BD: geglüht geschliffen
 CC: некалёная матовая - CD: некалёная шлифованная - BC: калёная матовая - BD: калёная шлифованная

Preis auf Anfrage
цена по запросу

1
2
3
4
5
6
7
8
9
10
11

8.02. Rohr AISI 316L

8.02. труба AISI 316L

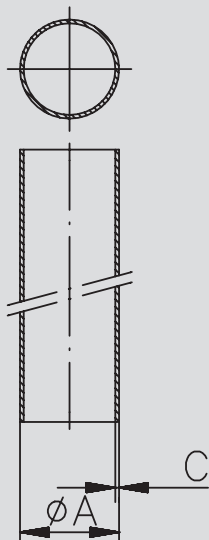
Getränkeleitungsrohr
DIN 11850 und Zoll

Art.-Nr. 800-

AISI 316L-1.4404

пищевая нержавеющая труба DIN 11850 и дюйм

DN	A	B	C	D	E	Gew.	Art.-Nr.	Preis	Art.-Nr.	Preis	Art.-Nr.	Preis	Art.-Nr.	Preis
mm	mm	mm	mm	mm	mm	kg/m	CC	EUR	CD	EUR	BC	EUR	BD	EUR
15	18,0	1,50				0,620	-101801504		-201801504		-301801504		-401801504	
15	19,0	1,50				0,657	-101901504		-201901504		-301901504		-401901504	
20	22,0	1,00				0,526	-102201004		-202201004		-302201004		-402201004	
20	22,0	1,50				0,770	-102201504		-202201504		-302201504		-402201504	
20	23,0	1,50				0,808	-102301504		-202301504		-302301504		-402301504	
1"	25,4	1,20				0,727	-102541204		-202541204		-302541204		-402541204	
1"	25,4	1,50				0,898	-102541504		-202541504		-302541504		-402541504	
25	28,0	1,00				0,676	-102801004		-202801004		-302801004		-402801004	
25	28,0	1,50				0,995	-102801504		-202801504		-302801504		-402801504	
25	29,0	1,50				1,033	-102901504		-202901504		-302901504		-402901504	
1,25"	31,8	1,25				0,956	-103181254		-203181254		-303181254		-403181254	
1,25"	31,8	1,50				1,138	-103181504		-203181504		-303181504		-403181504	
32	34,0	1,00				0,826	-103401004		-203401004		-303401004		-403401004	
32	34,0	1,50				1,221	-103401504		-203401504		-303401504		-403401504	
32	35,0	1,50				1,258	-103501504		-203501504		-303501504		-403501504	
1,5"	38,1	1,25				1,153	-103811254		-203811254		-303811254		-403811254	
1,5"	38,1	1,50				1,375	-103811504		-203811504		-303811504		-403811504	
40	40,0	1,00				0,977	-104001004		-204001004		-304001004		-404001004	
40	40,0	1,50				1,446	-104001504		-204001504		-304001504		-404001504	
40	41,0	1,50				1,484	-104101504		-204101504		-304101504		-404101504	
2"	50,8	1,25				1,551	-105081254		-205081254		-305081254		-405081254	
2"	50,8	1,50				1,852	-105081504		-205081504		-305081504		-405081504	
50	52,0	1,00				1,277	-105201004		-205201004		-305201004		-405201004	
50	52,0	1,50				1,897	-105201504		-205201504		-305201504		-405201504	
50	53,0	1,50				1,934	-105301504		-205301504		-305301504		-405301504	
2,5"	63,5	1,50				2,329	-106351504		-206351504		-306351504		-406351504	
65	70,0	2,00				3,405	-107002004		-207002004		-307002004		-407002004	
3"	76,1	1,50				2,984	-107611504		-207611504		-307611504		-407611504	
3"	76,1	2,00				3,711	-107612004		-207612004		-307612004		-407612004	
80	85,0	2,00				4,157	-108502004		-208502004		-308502004		-408502004	
4"	101,6	1,50				3,760	-110161504		-210161504		-310161504		-410161504	
4"	101,6	2,00				4,988	-110162004		-210162004		-310162004		-410162004	
100	104,0	2,00				5,108	-110402004		-210402004		-310402004		-410402004	
125	129,0	2,00				6,360	-112902004		-212902004		-312902004		-412902004	
150	154,0	2,00				7,612	-115402004		-215402004		-315402004		-415402004	



CC: ungeglüht matt - CD: ungeglüht geschliffen - BC: geglüht matt - BD: geglüht geschliffen

CC: некалёная матовая - CD: некалёная шлифованная - BC: калёная матовая - BD: калёная шлифованная

Preis auf Anfrage
цена по запросу

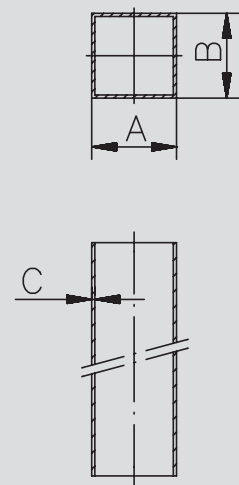
8.03. Vierkantrohr AISI 304/304L

8.03. прямоугольная труба AISI 304/304L

Art.-Nr. 81-							AISI 304/304L-1.4301/1.4307			
DN	A	B	C	D	E	Gew.	Art.-Nr. geschliffen	Preis EUR	Art.-Nr. matt	Preis EUR
mm	mm	mm	mm	mm	mm	kg/m				
15x15x1,5	15,0	15,0	1,5			0,660	-1501500151		-1501500152	
20x10x1,5	20,0	10,0	1,5			0,660	-1502000101		-1502000102	
20x20x1,5	20,0	20,0	1,5			0,883	-1502000201		-1502000202	
25x15x1,5	25,0	15,0	1,5			0,883	-1502500151		-1502500152	
25x25x1,5	25,0	25,0	1,5			1,146	-1502500251		-1502500252	
30x15x1,5	30,0	15,0	1,5			0,995	-1503000151		-1503000152	
30x20x1,5	30,0	20,0	1,5			1,146	-1503000201		-1503000202	
30x30x1,5	30,0	30,0	1,5			1,371	-1503000301		-1503000302	
40x20x1,5	40,0	20,0	1,5			1,371	-1504000201		-1504000202	
40x30x1,5	40,0	30,0	1,5			1,620	-1504000301		-1504000302	
40x40x1,5	40,0	40,0	1,5			1,859	-1504000401		-1504000402	
50x25x1,5	50,0	25,0	1,5			1,758	-1505000251		-1505000252	
50x30x1,5	50,0	30,0	1,5			1,859	-1505000301		-1505000302	
50x50x1,5	50,0	50,0	1,5			2,329	-1505000501		-1505000502	
60x30x1,5	60,0	30,0	1,5			2,122	-1506000301		-1506000302	
60x40x1,5	60,0	40,0	1,5			2,329	-1506000401		-1506000402	
20x20x2,0	20,0	20,0	2,0			1,152	-2002000201		-2002000202	
25x25x2,0	25,0	25,0	2,0			1,495	-2002500251		-2002500252	
30x20x2,0	30,0	20,0	2,0			1,495	-2003000201		-2003000202	
30x30x2,0	30,0	30,0	2,0			1,840	-2003000301		-2003000302	
35x35x2,0	35,0	35,0	2,0			2,150	-2003500351		-2003500352	
40x20x2,0	40,0	20,0	2,0			1,840	-2004000201		-2004000202	
40x30x2,0	40,0	30,0	2,0			2,150	-2004000301		-2004000302	
40x40x2,0	40,0	40,0	2,0			2,454	-2004000401		-2004000402	
50x20x2,0	50,0	20,0	2,0			2,150	-2005000201		-2005000202	
50x25x2,0	50,0	25,0	2,0			2,319	-2005000251		-2005000252	
50x30x2,0	50,0	30,0	2,0			2,454	-2005000301		-2005000302	
50x50x2,0	50,0	50,0	2,0			3,080	-2005000501		-2005000502	
60x30x2,0	60,0	30,0	2,0			2,804	-2006000301		-2006000302	
60x40x2,0	60,0	40,0	2,0			3,080	-2006000401		-2006000402	
60x60x2,0	60,0	60,0	2,0			3,711	-2006000601		-2006000602	
80x40x2,0	80,0	40,0	2,0			3,711	-2008000401		-2008000402	
80x60x2,0	80,0	60,0	2,0			4,380	-2008000601		-2008000602	
80x80x2,0	80,0	80,0	2,0			4,988	-2008000801		-2008000802	
100x40x2,0	100,0	40,0	2,0			4,380	-2010000401		-2010000402	
100x50x2,0	100,0	50,0	2,0			4,680	-2010000501		-2010000502	
100x60x2,0	100,0	60,0	2,0			4,960	-2010000601		-2010000602	
100x100x2,0	100,0	100,0	2,0			6,400	-2010001001		-2010001002	
30x30x3,0	30,0	30,0	3,0			2,720	-3003000301		-3003000302	
40x40x3,0	40,0	40,0	3,0			3,756	-3004000401		-3004000402	
50x30x3,0	50,0	30,0	3,0			3,756	-3005000301		-3005000302	
50x50x3,0	50,0	50,0	3,0			4,650	-3005000501		-3005000502	
60x40x3,0	60,0	40,0	3,0			4,650	-3006000401		-3006000402	
60x60x3,0	60,0	60,0	3,0			5,491	-3006000601		-3006000602	
80x40x3,0	80,0	40,0	3,0			5,491	-3008000401		-3008000402	
80x60x3,0	80,0	60,0	3,0			6,530	-3008000601		-3008000602	
80x80x3,0	80,0	80,0	3,0			7,530	-3008000801		-3008000802	
100x40x3,0	100,0	40,0	3,0			6,530	-3010000401		-3010000402	
100x50x3,0	100,0	50,0	3,0			6,864	-3010000501		-3010000502	
100x60x3,0	100,0	60,0	3,0			7,344	-3010000601		-3010000602	
100x80x3,0	100,0	80,0	3,0			8,304	-3010000801		-3010000802	
100x100x3,0	100,0	80,0	3,0			9,530	-3010001001		-3010001002	

Vierkant/
Rechteckrohr
geschweißt

прямоугольная /
квадратная нержа-
вующая труба



Preis auf Anfrage
цена по запросу

1
2
3
4
5
6
7
8
9
10
11

