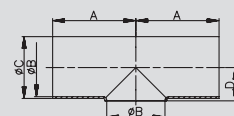


4.01. T-Stück kurz

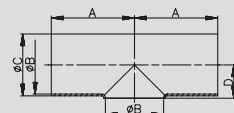
4.01. тройник короткий

Art.-Nr. 41110-							AISI 304/304L-1.4301/1.4307				AISI 316L-1.4404			
DN	A	B	C	D	E	Gew.	Art.-Nr.	Preis	Art.-Nr.	Preis	Art.-Nr.	Preis	Art.-Nr.	Preis
mm	mm	mm	mm	mm	mm	kg	poliert	EUR	matt	EUR	poliert	EUR	matt	EUR
10	26,0	9,0	12,0	7,0		0,015	-0101		-0102		-0103		-0104	
15	35,0	15,0	18,0	10,0		0,030	-0151		-0152		-0153		-0154	
20	40,0	19,0	22,0	12,0		0,050	-0201		-0202		-0203		-0204	
25	50,0	25,0	28,0	15,5		0,080	-0251		-0252		-0253		-0254	
32	55,0	31,0	34,0	18,5		0,110	-0321		-0322		-0323		-0324	
40	60,0	37,0	40,0	21,5		0,150	-0401		-0402		-0403		-0404	
50	70,0	49,0	52,0	28,0		0,240	-0501		-0502		-0503		-0504	
65	80,0	66,0	70,0	40,0		0,480	-0651		-0652		-0653		-0654	
80	90,0	81,0	85,0	47,5		0,650	-0801		-0802		-0803		-0804	
100	100,0	100,0	104,0	58,0		0,910	-1001		-1002		-1003		-1004	
125	187,5	125,0	129,0	71,5		2,160	-1251		-1252		-1253		-1254	
150	225,0	150,0	154,0	87,0		3,020	-1501		-1502		-1503		-1504	
200	300,0	200,0	204,0	111,0		5,550	-2001		-2002		-2003		-2004	
250	375,0	250,0	254,0	141,0			-2501		-2502		-2503		-2504	



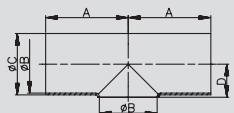
Art.-Nr. 41111-							AISI 304/304L-1.4301/1.4307				AISI 316L-1.4404			
DN	A	B	C	D	E	Gew.	Art.-Nr.	Preis	Art.-Nr.	Preis	Art.-Nr.	Preis	Art.-Nr.	Preis
mm	mm	mm	mm	mm	mm	kg	poliert	EUR	matt	EUR	poliert	EUR	matt	EUR
1"	50,0	22,9	25,4	14,0		0,060	-1001		-1002		-1003		-1004	
1,5"	60,0	35,1	38,1	20,0		0,140	-1121		-1122		-1123		-1124	
2"	70,0	47,8	50,8	27,5		0,230	-2001		-2002		-2003		-2004	
2,5"	80,0	60,2	63,5	36,0		0,340	-2121		-2122		-2123		-2124	
3"	90,0	72,8	76,1	44,0		0,620	-3001		-3002		-3003		-3004	
4"	100,0	97,4	101,6	56,0		0,890	-4001		-4002		-4003		-4004	

T-Stück SSS kurz (Zoll)
тройник CCC короткий (дюйм)



Art.-Nr. 41112-							AISI 304/304L-1.4301/1.4307				AISI 316L-1.4404			
DN	A	B	C	D	E	Gew.	Art.-Nr.	Preis	Art.-Nr.	Preis	Art.-Nr.	Preis	Art.-Nr.	Preis
mm	mm	mm	mm	mm	mm	kg	poliert	EUR	matt	EUR	poliert	EUR	matt	EUR
10	35,0	10,0	13,0	7,5		0,015					-0103		-0104	
15	35,0	16,0	19,0	11,0		0,030	-0151		-0152		-0153		-0154	
20	40,0	20,0	23,0	13,0		0,050	-0201		-0202		-0203		-0204	
25	50,0	26,0	29,0	16,5		0,080	-0251		-0252		-0253		-0254	
32	55,0	32,0	35,0	19,0		0,110	-0321		-0322		-0323		-0324	
40	60,0	38,0	41,0	22,5		0,150	-0401		-0402		-0403		-0404	
50	70,0	50,0	53,0	29,5		0,240	-0501		-0502		-0503		-0504	

T-Stück DIN 11852-TK
тройник DIN 11852-TK



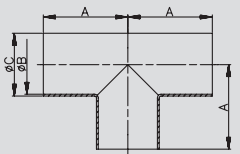
Preis auf Anfrage
цена по запросу

1
2
3
4
5
6
7
8
9
10
11

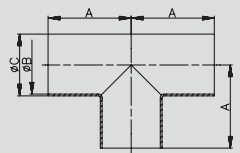
4.02. T-Stück lang

4.02. тройник длинный

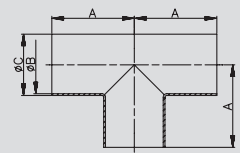
T-Stück SSS lang		Art.-Nr. 42220-						AISI 304/304L-1.4301/1.4307				AISI 316L-1.4404			
DN	A	B	C	D	E	Gew.	Art.-Nr.	Preis	Art.-Nr.	Preis	Art.-Nr.	Preis	Art.-Nr.	Preis	
							poliert	EUR	matt	EUR	poliert	EUR	matt	EUR	
10	26,0	9,0	12,0			0,020	-0101		-0102		-0103		-0104		
15	35,0	15,0	18,0			0,050	-0151		-0152		-0153		-0154		
20	40,0	19,0	22,0			0,090	-0201		-0202		-0203		-0204		
25	50,0	25,0	28,0			0,110	-0251		-0252		-0253		-0254		
32	55,0	31,0	34,0			0,150	-0321		-0322		-0323		-0324		
40	60,0	37,0	40,0			0,210	-0401		-0402		-0403		-0404		
50	70,0	49,0	52,0			0,310	-0501		-0502		-0503		-0504		
65	80,0	66,0	70,0			0,630	-0651		-0652		-0653		-0654		
80	90,0	81,0	85,0			0,870	-0801		-0802		-0803		-0804		
100	100,0	100,0	104,0			1,060	-1001		-1002		-1003		-1004		
125	187,5	125,0	129,0			2,840	-1251		-1252		-1253		-1254		
150	225,0	150,0	154,0			3,880	-1501		-1502		-1503		-1504		
200	300,0	200,0	204,0			9,950	-2001		-2002		-2003		-2004		
250	375,0	254,0	250,0				-2501		-2502		-2503		-2504		



T-Stück SSS lang (Zoll)		Art.-Nr. 42221-						AISI 304/304L-1.4301/1.4307				AISI 316L-1.4404			
DN	A	B	C	D	E	Gew.	Art.-Nr.	Preis	Art.-Nr.	Preis	Art.-Nr.	Preis	Art.-Nr.	Preis	
							poliert	EUR	matt	EUR	poliert	EUR	matt	EUR	
1"	50,0	22,9	25,4			0,090	-1001		-1002		-1003		-1004		
1,5"	60,0	35,1	38,1			0,165	-1121		-1122		-1123		-1124		
2"	70,0	47,8	50,8			0,330	-2001		-2002		-2003		-2004		
2,5"	80,0	60,2	63,5			0,400	-2121		-2122		-2123		-2124		
3"	90,0	72,8	76,1			0,540	-3001		-3002		-3003		-3004		
4"	100,0	97,4	101,6			1,010	-4001		-4002		-4003		-4004		



T-Stück DIN 11852-TS		Art.-Nr. 42222-						AISI 304/304L-1.4301/1.4307				AISI 316L-1.4404			
DN	A	B	C	D	E	Gew.	Art.-Nr.	Preis	Art.-Nr.	Preis	Art.-Nr.	Preis	Art.-Nr.	Preis	
							poliert	EUR	matt	EUR	poliert	EUR	matt	EUR	
10	26,0	10,0	13,0			0,020					-0103		-0104		
15	35,0	16,0	19,0			0,050	-0151		-0152		-0153		-0154		
20	40,0	20,0	23,0			0,090	-0201		-0202		-0203		-0204		
25	50,0	26,0	29,0			0,110	-0251		-0252		-0253		-0254		
32	55,0	32,0	35,0			0,150	-0321		-0322		-0323		-0324		
40	60,0	38,0	41,0			0,210	-0401		-0402		-0403		-0404		
50	70,0	50,0	53,0			0,310	-0501		-0502		-0503		-0504		



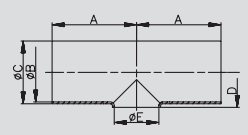
4.03. Red-T-Stück kurz

4.03. переходной тройник короткий

Art.-Nr. 42270-							AISI 304/304L-1.4301/1.4307				AISI 316L-1.4404			
DN	A	B	C	D	E	Gew.	Art.-Nr.	Preis	Art.-Nr.	Preis	Art.-Nr.	Preis	Art.-Nr.	Preis
mm	mm	mm	mm	mm	mm	kg	poliert	EUR	matt	EUR	poliert	EUR	matt	EUR
15-10	35,0	15,0	18,0	10,0	9,0	0,040	-0151010		-0152010		-0153010		-0154010	
20-10	40,0	19,0	22,0	12,0	9,0	0,070	-0201010		-0202010		-0203010		-0204010	
20-15	40,0	19,0	22,0	12,0	15,0	0,060	-0201015		-0202015		-0203015		-0204015	
25-10	50,0	25,0	28,0	16,0	9,0	0,110	-0251010		-0252010		-0253010		-0254010	
25-15	50,0	25,0	28,0	16,0	15,0	0,100	-0251015		-0252015		-0253015		-0254015	
25-20	50,0	25,0	28,0	16,0	19,0	0,090	-0251020		-0252020		-0253020		-0254020	
32-15	55,0	31,0	34,0	20,5	15,0	0,130	-0321015		-0322015		-0323015		-0324015	
32-20	55,0	31,0	34,0	20,5	19,0	0,130	-0321020		-0322020		-0323020		-0324020	
32-25	55,0	31,0	34,0	20,5	25,0	0,130	-0321025		-0322025		-0323025		-0324025	
40-15	60,0	37,0	40,0	23,0	15,0	0,160	-0401015		-0402015		-0403015		-0404015	
40-20	60,0	37,0	40,0	23,0	19,0	0,160	-0401020		-0402020		-0403020		-0404020	
40-25	60,0	37,0	40,0	23,0	25,0	0,160	-0401025		-0402025		-0403025		-0404025	
40-32	60,0	37,0	40,0	23,0	31,0	0,150	-0401032		-0402032		-0403032		-0404032	
50-20	70,0	49,0	52,0	29,0	19,0	0,260	-0501020		-0502020		-0503020		-0504020	
50-25	70,0	49,0	52,0	29,0	25,0	0,240	-0501025		-0502025		-0503025		-0504025	
50-32	70,0	49,0	52,0	29,0	31,0	0,250	-0501032		-0502032		-0503032		-0504032	
50-40	70,0	49,0	52,0	29,0	37,0	0,230	-0501040		-0502040		-0503040		-0504040	
65-25	80,0	66,0	70,0	39,0	25,0	0,520	-0651025		-0652025		-0653025		-0654025	
65-32	80,0	66,0	70,0	39,0	31,0	0,520	-0651032		-0652032		-0653032		-0654032	
65-40	80,0	66,0	70,0	39,0	37,0	0,510	-0651040		-0652040		-0653040		-0654040	
65-50	80,0	66,0	70,0	39,0	49,0	0,520	-0651050		-0652050		-0653050		-0654050	
80-25	90,0	81,0	85,0	47,0	25,0	0,720	-0801025		-0802025		-0803025		-0804025	
80-32	90,0	81,0	85,0	47,0	31,0	0,700	-0801032		-0802032		-0803032		-0804032	
80-40	90,0	81,0	85,0	47,0	37,0	0,700	-0801040		-0802040		-0803040		-0804040	
80-50	90,0	81,0	85,0	47,0	49,0	0,690	-0801050		-0802050		-0803050		-0804050	
80-65	90,0	81,0	85,0	47,0	66,0	0,680	-0801065		-0802065		-0803065		-0804065	
100-25	100,0	100,0	104,0	58,0	25,0	0,960	-1001025		-1002025		-1003025		-1004025	
100-32	100,0	100,0	104,0	58,0	31,0	0,960	-1001032		-1002032		-1003032		-1004032	
100-40	100,0	100,0	104,0	58,0	37,0	0,950	-1001040		-1002040		-1003040		-1004040	
100-50	100,0	100,0	104,0	58,0	49,0	0,940	-1001050		-1002050		-1003050		-1004050	
100-65	100,0	100,0	104,0	58,0	66,0	0,950	-1001065		-1002065		-1003065		-1004065	
100-80	100,0	100,0	104,0	58,0	81,0	0,950	-1001080		-1002080		-1003080		-1004080	
125-25	187,5	125,0	129,0	71,5	25,0	2,220	-1251025		-1252025		-1253025		-1254025	
125-32	187,5	125,0	129,0	71,5	31,0	2,210	-1251032		-1252032		-1253032		-1254032	
125-40	187,5	125,0	129,0	71,5	37,0	2,250	-1251040		-1252040		-1253040		-1254040	
125-50	187,5	125,0	129,0	71,5	49,0	2,240	-1251050		-1252050		-1253050		-1254050	
125-65	187,5	125,0	129,0	71,5	66,0	2,160	-1251065		-1252065		-1253065		-1254065	
125-80	187,5	125,0	129,0	71,5	81,0	2,170	-1251080		-1252080		-1253080		-1254080	
125-100	187,5	125,0	129,0	71,5	100,0	2,140	-1251100		-1252100		-1253100		-1254100	
150-40	225,0	150,0	154,0	87,0	37,0	3,220	-1501040		-1502040		-1503040		-1504040	
150-50	225,0	150,0	154,0	87,0	49,0	3,180	-1501050		-1502050		-1503050		-1504050	
150-65	225,0	150,0	154,0	87,0	66,0	3,160	-1501065		-1502065		-1503065		-1504065	
150-80	225,0	150,0	154,0	87,0	81,0	3,170	-1501080		-1502080		-1503080		-1504080	
150-100	225,0	150,0	154,0	87,0	100,0	3,140	-1501100		-1502100		-1503100		-1504100	
150-125	225,0	150,0	154,0	87,0	125,0	3,070	-1501125		-1502125		-1503125		-1504125	
200-125	300,0	200,0	204,0	110,0	125,0		-2001125		-2002125		-2003125		-2004125	
200-150	300,0	200,0	204,0	110,0	150,0		-2001150		-2002150		-2003150		-2004150	
250-150	375,0	250,0	254,0	141,0	150,0		-2501150		-2502150		-2503150		-2504150	
250-200	375,0	250,0	254,0	141,0	200,0		-2501200		-2502200		-2503200		-2504200	

Red-T-Stück SSS kurz

тройник переходной CCC короткий



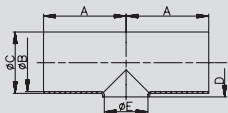
Preis auf Anfrage
цена по запросу

4.04. Red-T-Stück kurz

4.03. переходной тройник короткий

Red-T-Stück
ähnl. DIN 11852-TK

тройник переходной как DIN 11852-TK



Art.-Nr. 42272-	AISI 304/304L-1.4301/1.4307							AISI 316L-1.4404						
	DN	A	B	C	D	E	Gew.	Art.-Nr. poliert	Preis EUR	Art.-Nr. matt	Preis EUR	Art.-Nr. poliert	Preis EUR	Art.-Nr. matt
15-10	35,0	16,0	19,0	11,0	10,0	0,040	-0151010		-0152010		-0153010		-0154010	
20-10	40,0	20,0	23,0	13,0	10,0	0,070	-0201010		-0202010		-0203010		-0204010	
20-15	40,0	20,0	23,0	13,0	16,0	0,060	-0201015		-0202015		-0203015		-0204015	
25-10	50,0	26,0	29,0	16,0	13,0	0,110	-0251010		-0252010		-0253010		-0254010	
25-15	50,0	26,0	29,0	16,0	16,0	0,100	-0251015		-0252015		-0253015		-0254015	
25-20	50,0	26,0	29,0	16,0	20,0	0,090	-0251020		-0252020		-0253020		-0254020	
32-15	55,0	32,0	35,0	19,5	16,0	0,130	-0321015		-0322015		-0323015		-0324015	
32-20	55,0	32,0	35,0	19,5	20,0	0,130	-0321020		-0322020		-0323020		-0324020	
32-25	55,0	32,0	35,0	19,5	26,0	0,130	-0321025		-0322025		-0323025		-0324025	
40-20	60,0	38,0	41,0	23,0	20,0	0,160	-0401020		-0402020		-0403020		-0404020	
40-25	60,0	38,0	41,0	23,0	26,0	0,160	-0401025		-0402025		-0403025		-0404025	
40-32	60,0	38,0	41,0	23,0	32,0	0,150	-0401032		-0402032		-0403032		-0404032	
50-25	70,0	50,0	53,0	30,0	26,0	0,240	-0501025		-0502025		-0503025		-0504025	
50-32	70,0	50,0	53,0	30,0	32,0	0,250	-0501032		-0502032		-0503032		-0504032	
50-40	70,0	50,0	53,0	30,0	38,0	0,230	-0501040		-0502040		-0503040		-0504040	
65-25	80,0	66,0	70,0	40,0	26,0	0,520	-0651025		-0652025		-0653025		-0654025	
65-32	80,0	66,0	70,0	40,0	32,0	0,520	-0651032		-0652032		-0653032		-0654032	
65-40	80,0	66,0	70,0	40,0	38,0	0,510	-0651040		-0652040		-0653040		-0654040	
65-50	80,0	66,0	70,0	40,0	50,0	0,520	-0651050		-0652050		-0653050		-0654050	
80-25	90,0	81,0	85,0	47,5	26,0	0,720	-0801025		-0802025		-0803025		-0804025	
80-32	90,0	81,0	85,0	47,5	32,0	0,700	-0801032		-0802032		-0803032		-0804032	
80-40	90,0	81,0	85,0	47,5	38,0	0,700	-0801040		-0802040		-0803040		-0804040	
80-50	90,0	81,0	85,0	47,5	50,0	0,690	-0801050		-0802050		-0803050		-0804050	
100-25	100,0	100,0	104,0	58,0	26,0	0,960	-1001025		-1002025		-1003025		-1004025	
100-32	100,0	100,0	104,0	58,0	32,0	0,960	-1001032		-1002032		-1003032		-1004032	
100-40	100,0	100,0	104,0	58,0	38,0	0,950	-1001040		-1002040		-1003040		-1004040	
100-50	100,0	100,0	104,0	58,0	50,0	0,940	-1001050		-1002050		-1003050		-1004050	
125-25	187,5	125,0	129,0	74,0	26,0	2,220	-1251025		-1252025		-1253025		-1254025	
125-32	187,5	125,0	129,0	74,0	32,0	2,210	-1251032		-1252032		-1253032		-1254032	
125-40	187,5	125,0	129,0	74,0	38,0	2,250	-1251040		-1252040		-1253040		-1254040	
125-50	187,5	125,0	129,0	74,0	50,0	2,240	-1251050		-1252050		-1253050		-1254050	
150-40	225,0	150,0	154,0	90,0	38,0	3,220	-1501040		-1502040		-1503040		-1504040	
150-50	225,0	150,0	154,0	90,0	50,0	3,180	-1501050		-1502050		-1503050		-1504050	

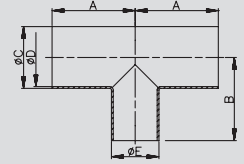
4.05. Red-T-Stück lang

4.05. переходной тройник длинный

Art.-Nr. 42280-							AISI 304/304L-1.4301/1.4307				AISI 316L-1.4404			
DN	A	B	C	D	E	Gew.	Art.-Nr.	Preis	Art.-Nr.	Preis	Art.-Nr.	Preis	Art.-Nr.	Preis
mm	mm	mm	mm	mm	mm	kg	poliert	EUR	matt	EUR	poliert	EUR	matt	EUR
15-10	35,0	29,0	18,0	15,0	12,0	0,050	-0151010		-0152010		-0153010		-0154010	
20-10	40,0	31,0	22,0	19,0	12,0	0,080	-0201010		-0202010		-0203010		-0204010	
20-15	40,0	37,5	22,0	19,0	18,0	0,080	-0201015		-0202015		-0203015		-0204015	
25-10	50,0	35,0	28,0	25,0	12,0	0,100	-0251010		-0252010		-0253010		-0254010	
25-15	50,0	40,0	28,0	25,0	18,0	0,100	-0251015		-0252015		-0253015		-0254015	
25-20	50,0	42,0	28,0	25,0	22,0	0,100	-0251020		-0252020		-0253020		-0254020	
32-15	55,0	44,0	34,0	31,0	18,0	0,150	-0321015		-0322015		-0323015		-0324015	
32-20	55,0	46,0	34,0	31,0	22,0	0,150	-0321020		-0322020		-0323020		-0324020	
32-25	55,0	54,0	34,0	31,0	28,0	0,150	-0321025		-0322025		-0323025		-0324025	
40-15	60,0	48,0	40,0	37,0	18,0	0,160	-0401015		-0402015		-0403015		-0404015	
40-20	60,0	50,0	40,0	37,0	22,0	0,160	-0401020		-0402020		-0403020		-0404020	
40-25	60,0	58,0	40,0	37,0	28,0	0,180	-0401025		-0402025		-0403025		-0404025	
40-32	60,0	60,0	40,0	37,0	34,0	0,200	-0401032		-0402032		-0403032		-0404032	
50-20	70,0	56,5	52,0	49,0	22,0	0,250	-0501020		-0502020		-0503020		-0504020	
50-25	70,0	65,0	52,0	49,0	28,0	0,270	-0501025		-0502025		-0503025		-0504025	
50-32	70,0	68,0	52,0	49,0	34,0	0,270	-0501032		-0502032		-0503032		-0504032	
50-40	70,0	70,0	52,0	49,0	40,0	0,310	-0501040		-0502040		-0503040		-0504040	
65-25	80,0	74,0	70,0	66,0	28,0	0,500	-0651025		-0652025		-0653025		-0654025	
65-32	80,0	76,0	70,0	66,0	34,0	0,500	-0651032		-0652032		-0653032		-0654032	
65-40	80,0	77,0	70,0	66,0	40,0	0,510	-0651040		-0652040		-0653040		-0654040	
65-50	80,0	82,0	70,0	66,0	52,0	0,600	-0651050		-0652050		-0653050		-0654050	
80-25	90,0	82,0	85,0	81,0	28,0	0,730	-0801025		-0802025		-0803025		-0804025	
80-32	90,0	84,0	85,0	81,0	34,0	0,730	-0801032		-0802032		-0803032		-0804032	
80-40	90,0	85,5	85,0	81,0	40,0	0,740	-0801040		-0802040		-0803040		-0804040	
80-50	90,0	92,0	85,0	81,0	52,0	0,760	-0801050		-0802050		-0803050		-0804050	
80-65	90,0	90,0	85,0	81,0	70,0	0,840	-0801065		-0802065		-0803065		-0804065	
100-25	100,0	92,0	104,0	100,0	28,0	1,020	-1001025		-1002025		-1003025		-1004025	
100-32	100,0	94,0	104,0	100,0	34,0	1,040	-1001032		-1002032		-1003032		-1004032	
100-40	100,0	95,0	104,0	100,0	40,0	1,060	-1001040		-1002040		-1003040		-1004040	
100-50	100,0	103,0	104,0	100,0	52,0	1,080	-1001050		-1002050		-1003050		-1004050	
100-65	100,0	101,0	104,0	100,0	70,0	1,170	-1001065		-1002065		-1003065		-1004065	
100-80	100,0	106,0	104,0	125,0	85,0	1,240	-1001080		-1002080		-1003080		-1004080	
125-25	187,5	104,0	129,0	125,0	28,0	2,020	-1251025		-1252025		-1253025		-1254025	
125-32	187,5	106,0	129,0	125,0	34,0	2,030	-1251032		-1252032		-1253032		-1254032	
125-40	187,5	107,0	129,0	125,0	40,0	2,040	-1251040		-1252040		-1253040		-1254040	
125-50	187,5	110,0	129,0	125,0	52,0	2,070	-1251050		-1252050		-1253050		-1254050	
125-65	187,5	110,0	129,0	125,0	70,0	2,080	-1251065		-1252065		-1253065		-1254065	
125-80	187,5	113,0	129,0	125,0	85,0	2,170	-1251080		-1252080		-1253080		-1254080	
125-100	187,5	113,0	129,0	125,0	104,0	2,220	-1251100		-1252100		-1253100		-1254100	
150-40	225,0	120,0	154,0	150,0	40,0	2,990	-1501040		-1502040		-1503040		-1504040	
150-50	225,0	123,0	154,0	150,0	52,0	3,020	-1501050		-1502050		-1503050		-1504050	
150-65	225,0	123,0	154,0	150,0	70,0	3,030	-1501065		-1502065		-1503065		-1504065	
150-80	225,0	125,0	154,0	150,0	85,0	3,090	-1501080		-1502080		-1503080		-1504080	
150-100	225,0	125,0	154,0	150,0	104,0	3,180	-1501100		-1502100		-1503100		-1504100	
150-125	225,0	198,0	154,0	150,0	129,0	3,390	-1501125		-1502125		-1503125		-1504125	

Red-T-Stück
SSS lang

тройник переходной
ССС длинный



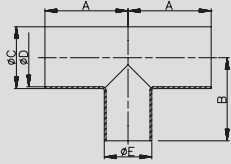
1
2
3
4
5
6
7
8
9
10
11

4.06. Red-T-Stück lang

4.06. переходной тройник длинный

Red-T-Stück
ähnl. DIN 11852-TS

тройник переходной как DIN 11852-TS



Art.-Nr. 42282-	AISI 304/304L-1.4301/1.4307							AISI 316L-1.4404							
	DN	A	B	C	D	E	Gew.	Art.-Nr. poliert	Preis EUR	Art.-Nr. matt	Preis EUR	Art.-Nr. poliert	Preis EUR	Art.-Nr. matt	Preis EUR
15-10	35,0	18,5	19,0	16,0	13,0	0,050						-0153010		-0154010	
20-10	40,0	40,5	23,0	20,0	13,0	0,080						-0203010		-0204010	
20-15	40,0	37,0	23,0	20,0	19,0	0,080	-0201015		-0202015			-0203015		-0204015	
25-10	50,0	43,5	29,0	26,0	13,0	0,090						-0253010		-0254010	
25-15	50,0	40,0	29,0	26,0	19,0	0,100	-0251015		-0252015			-0253015		-0254015	
25-20	50,0	43,0	29,0	26,0	23,0	0,100	-0251020		-0252020			-0253020		-0254020	
32-15	55,0	43,5	35,0	32,0	19,0	0,150	-0321015		-0322015			-0323015		-0324015	
32-20	55,0	46,5	35,0	32,0	23,0	0,150	-0321020		-0322020			-0323020		-0324020	
32-25	55,0	53,5	35,0	32,0	29,0	0,150	-0321025		-0322025			-0323025		-0324025	
40-20	60,0	50,0	41,0	38,0	23,0	0,160	-0401020		-0402020			-0403020		-0404020	
40-25	60,0	57,0	41,0	38,0	29,0	0,180	-0401025		-0402025			-0403025		-0404025	
40-32	60,0	58,5	41,0	38,0	35,0	0,200	-0401032		-0402032			-0403032		-0404032	
50-25	70,0	64,0	53,0	50,0	29,0	0,270	-0501025		-0502025			-0503025		-0504025	
50-32	70,0	65,5	53,0	50,0	35,0	0,270	-0501032		-0502032			-0503032		-0504032	
50-40	70,0	67,0	53,0	50,0	41,0	0,310	-0501040		-0502040			-0503040		-0504040	
65-25	80,0	74,0	70,0	66,0	29,0	0,500	-0651025		-0652025			-0653025		-0654025	
65-32	80,0	75,5	70,0	66,0	35,0	0,500	-0651032		-0652032			-0653032		-0654032	
65-40	80,0	77,0	70,0	66,0	41,0	0,510	-0651040		-0652040			-0653040		-0654040	
65-50	80,0	80,0	70,0	66,0	53,0	0,600	-0651050		-0652050			-0653050		-0654050	
80-25	90,0	81,5	85,0	81,0	29,0	0,730	-0801025		-0802025			-0803025		-0804025	
80-32	90,0	83,0	85,0	81,0	35,0	0,730	-0801032		-0802032			-0803032		-0804032	
80-40	90,0	84,5	85,0	81,0	41,0	0,740	-0801040		-0802040			-0803040		-0804040	
80-50	90,0	87,5	85,0	81,0	53,0	0,760	-0801050		-0802050			-0803050		-0804050	
100-25	100,0	92,0	104,0	100,0	29,0	1,020	-1001025		-1002025			-1003025		-1004025	
100-32	100,0	93,5	104,0	100,0	35,0	1,040	-1001032		-1002032			-1003032		-1004032	
100-40	100,0	95,0	104,0	100,0	41,0	1,060	-1001040		-1002040			-1003040		-1004040	
100-50	100,0	98,0	104,0	100,0	53,0	1,080	-1001050		-1002050			-1003050		-1004050	
125-25	187,5	108,0	129,0	125,0	29,0	2,020	-1251025		-1252025			-1253025		-1254025	
125-32	187,5	109,5	129,0	125,0	35,0	2,030	-1251032		-1252032			-1253032		-1254032	
125-40	187,5	111,0	129,0	125,0	41,0	2,040	-1251040		-1252040			-1253040		-1254040	
125-50	187,5	114,0	129,0	125,0	53,0	2,070	-1251050		-1252050			-1253050		-1254050	
150-40	225,0	127,0	154,0	150,0	41,0	2,990	-1501040		-1502040			-1503040		-1504040	
150-50	225,0	130,0	154,0	150,0	53,0	3,020	-1501050		-1502050			-1503050		-1504050	

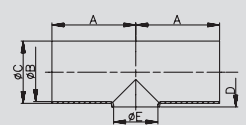
4.07. Red-T-Stück (Zoll), Walz-T-Stück

4.07. переходной тройник (дюйм), тройник под вальцовку

Art.-Nr. 42271-							AISI 304/304L-1.4301/1.4307				AISI 316L-1.4404			
DN	A	B	C	D	E	Gew.	Art.-Nr.	Preis	Art.-Nr.	Preis	Art.-Nr.	Preis	Art.-Nr.	Preis
mm	mm	mm	mm	mm	mm	kg	poliert	EUR	matt	EUR	poliert	EUR	matt	EUR
1,5-1"	60,0	35,1	38,1	20,0	22,9	0,140	-1121100		-1122100		-1123100		-1124100	
2-1"	70,0	47,8	50,8	27,5	22,9	0,220	-2001100		-2002100		-2003100		-2004100	
2-1,5"	70,0	47,8	50,8	27,5	35,1	0,230	-2001112		-2002112		-2003112		-2004112	
2,5-1"	80,0	60,2	63,5	36,0	22,9	0,340	-2121100		-2122100		-2123100		-2124100	
2,5-1,5"	80,0	60,2	63,5	36,0	35,1	0,340	-2121112		-2122112		-2123112		-2124112	
2,5-2"	80,0	60,2	63,5	36,0	47,8	0,340	-2121200		-2122200		-2123200		-2124200	
3-1"	90,0	72,8	76,1	44,0	22,9	0,620	-3001100		-3002100		-3003100		-3004100	
3-1,5"	90,0	72,8	76,1	44,0	35,1	0,620	-3001112		-3002112		-3003112		-3004112	
3-2"	90,0	72,8	76,1	44,0	47,8	0,620	-3001200		-3002200		-3003200		-3004200	
3-2,5"	90,0	72,8	76,1	44,0	60,2	0,620	-3001212		-3002212		-3003212		-3004212	
4-1,5"	100,0	97,4	101,6	56,0	35,1	0,890	-4001112		-4002112		-4003112		-4004112	
4-2"	100,0	97,4	101,6	56,0	47,8	0,890	-4001200		-4002200		-4003200		-4004200	
4-2,5"	100,0	97,4	101,6	56,0	60,5	0,890	-4001212		-4002212		-4003212		-4004212	
4-3"	100,0	97,4	101,6	56,0	72,8	0,890	-4001300		-4002300		-4003300		-4004300	

Red-T-Stück SSS kurz (Zoll)

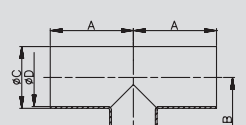
тройник переходной CCC короткий (дюйм)



Art.-Nr. 42281-							AISI 304/304L-1.4301/1.4307				AISI 316L-1.4404			
DN	A	B	C	D	E	Gew.	Art.-Nr.	Preis	Art.-Nr.	Preis	Art.-Nr.	Preis	Art.-Nr.	Preis
mm	mm	mm	mm	mm	mm	kg	poliert	EUR	matt	EUR	poliert	EUR	matt	EUR
1,5-1"	60,0	56,0	38,1	35,1	25,4	0,150	-1121100		-1122100		-1123100		-1124100	
2-1"	70,0	63,5	50,8	47,8	25,4	0,230	-2001100		-2002100		-2003100		-2004100	
2-1,5"	70,0	67,5	50,8	47,8	38,1	0,240	-2001112		-2002112		-2003112		-2004112	
2,5-1"	80,0	72,0	63,5	60,2	25,4	0,440	-2121100		-2122100		-2123100		-2124100	
2,5-1,5"	80,0	76,0	63,5	60,2	38,1	0,450	-2121112		-2122112		-2123112		-2124112	
2,5-2"	80,0	78,5	63,5	60,2	50,8	0,460	-2121200		-2122200		-2123200		-2124200	
3-1"	90,0	80,0	76,1	72,8	25,4	0,890	-3001100		-3002100		-3003100		-3004100	
3-1,5"	90,0	84,0	76,1	72,8	38,1	0,900	-3001112		-3002112		-3003112		-3004112	
3-2"	90,0	86,5	76,1	72,8	50,8	0,910	-3001200		-3002200		-3003200		-3004200	
3-2,5"	90,0	90,0	76,1	72,8	63,5	0,920	-3001212		-3002212		-3003212		-3004212	
4-1,5"	100,0	93,0	101,6	97,4	38,1	0,980	-4001112		-4002112		-4003112		-4004112	
4-2"	100,0	98,5	101,6	97,4	50,8	1,020	-4001200		-4002200		-4003200		-4004200	
4-2,5"	100,0	100,0	101,6	97,4	63,5	1,050	-4001212		-4002212		-4003212		-4004212	
4-3"	100,0	102,0	101,6	97,4	76,1	1,120	-4001300		-4002300		-4003300		-4004300	

Red-T-Stück SSS lang (Zoll)

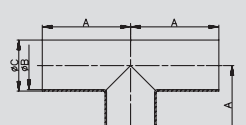
тройник переходной CCC длинный (дюйм)



Art.-Nr. 43330-							AISI 304/304L-1.4301/1.4307				AISI 316L-1.4404			
DN	A	B	C	D	E	Gew.	Art.-Nr.	Preis	Art.-Nr.	Preis	Art.-Nr.	Preis	Art.-Nr.	Preis
mm	mm	mm	mm	mm	mm	kg	poliert	EUR	matt	EUR	poliert	EUR	matt	EUR
10	34,0	9,0	12,0			0,020	-0101		-0102		-0103		-0104	
15	43,0	15,0	18,0			0,050	-0151		-0152		-0153		-0154	
20	47,0	19,0	22,0			0,070	-0201		-0202		-0203		-0204	
25	58,0	25,0	28,0			0,130	-0251		-0252		-0253		-0254	
32	63,0	31,0	34,0			0,180	-0321		-0322		-0323		-0324	
40	69,0	37,0	40,0			0,230	-0401		-0402		-0403		-0404	
50	80,0	49,0	52,0			0,350	-0501		-0502		-0503		-0504	
65	90,0	66,0	70,0			0,700	-0651		-0652		-0653		-0654	
80	98,0	81,0	85,0			0,910	-0801		-0802		-0803		-0804	
100	111,0	100,0	104,0			1,220	-1001		-1002		-1003		-1004	

T-Stück WWW

тройник ВВВ



4.08. T-Stück mit Anschlüssen

4.08. тройник с подключениями

T-Stück CCC тройник ККК	Art.-Nr. 44440-							AISI 304/304L-1.4301/1.4307				AISI 316L-1.4404			
	DN	A	B	C	D	E	Gew.	Art.-Nr.	Preis	Art.-Nr.	Preis	Art.-Nr.	Preis	Art.-Nr.	Preis
	mm	mm	mm	mm	mm	mm	kg	poliert	EUR	matt	EUR	poliert	EUR	matt	EUR
	10	39,0	10,0		34,0		0,160	-0101		-0102		-0103		-0104	
	15	48,0	16,0		34,0		0,170	-0151		-0152		-0153		-0154	
	20	53,0	20,0		34,0		0,180	-0201		-0202		-0203		-0204	
	25	63,0	26,0		50,5		0,310	-0251		-0252		-0253		-0254	
	32	68,0	32,0		50,5		0,330	-0321		-0322		-0323		-0324	
	40	73,0	38,0		50,5		0,340	-0401		-0402		-0403		-0404	
	50	83,0	50,0		64,0		0,500	-0501		-0502		-0503		-0504	
	65	93,0	66,0		91,0		0,920	-0651		-0652		-0653		-0654	
	80	103,0	81,0		106,0		1,450	-0801		-0802		-0803		-0804	
	100	113,0	100,0		119,0		1,740	-1001		-1002		-1003		-1004	

T-Stück CCC (Zoll) тройник ККК (дюйм)	Art.-Nr. 44441-							AISI 304/304L-1.4301/1.4307				AISI 316L-1.4404			
	DN	A	B	C	D	E	Gew.	Art.-Nr.	Preis	Art.-Nr.	Preis	Art.-Nr.	Preis	Art.-Nr.	Preis
	mm	mm	mm	mm	mm	mm	kg	poliert	EUR	matt	EUR	poliert	EUR	matt	EUR
	1"	63,0	22,9		50,5		0,200	-1001		-1002		-1003		-1004	
	1,5"	73,0	35,1		50,5		0,240	-1121		-1122		-1123		-1124	
	2"	83,0	47,8		64,0		0,460	-2001		-2002		-2003		-2004	
	2,5"	93,0	60,2		77,5		0,730	-2121		-2122		-2123		-2124	
	3"	103,0	72,8		91,0		1,280	-3001		-3002		-3003		-3004	
	4"	113,0	97,4		119,0		1,760	-4001		-4002		-4003		-4004	

T-Stück GGG тройник РРР	Art.-Nr. 45550-							AISI 304/304L-1.4301/1.4307				AISI 316L-1.4404			
	DN	A	B	C	D	E	Gew.	Art.-Nr.	Preis	Art.-Nr.	Preis	Art.-Nr.	Preis	Art.-Nr.	Preis
	mm	mm	mm	mm	mm	mm	kg	poliert	EUR	matt	EUR	poliert	EUR	matt	EUR
	10	43,0		10,0		Rd28x1/8"	0,145	-0101		-0102		-0103		-0104	
	15	52,0		16,0		Rd34x1/8"	0,195	-0151		-0152		-0153		-0154	
	20	59,0		20,0		Rd44x1/6"	0,295	-0201		-0202		-0203		-0204	
	25	72,0		26,0		Rd52x1/6"	0,390	-0251		-0252		-0253		-0254	
	32	77,0		32,0		Rd58x1/6"	0,450	-0321		-0322		-0323		-0324	
	40	82,0		38,0		Rd65x1/6"	0,595	-0401		-0402		-0403		-0404	
	50	93,0		50,0		Rd78x1/6"	0,760	-0501		-0502		-0503		-0504	
	65	105,0		66,0		Rd95x1/6"	1,420	-0651		-0652		-0653		-0654	
	80	115,0		81,0		Rd110x1/4"	2,070	-0801		-0802		-0803		-0804	
	100	130,0		100,0		Rd130x1/4"	3,340	-1001		-1002		-1003		-1004	

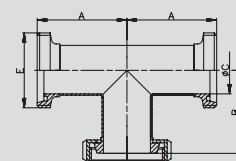
Rd: Rundgewinde
Rd: резьба короткая

4.09. T-Stück mit Anschlüssen

4.09. тройник подключениями

Art.-Nr. 45560-							AISI 304/304L-1.4301/1.4307				AISI 316L-1.4404			
DN	A	B	C	D	E	Gew.	Art.-Nr.	Preis	Art.-Nr.	Preis	Art.-Nr.	Preis	Art.-Nr.	Preis
mm	mm	mm	mm	mm	mm	kg	poliert	EUR	matt	EUR	poliert	EUR	matt	EUR
10	43,0	39,0	10,0		Rd28x1/8"	0,200	-0101		-0102		-0103		-0104	
15	52,0	48,0	16,0		Rd34x1/8"	0,250	-0151		-0152		-0153		-0154	
20	59,0	53,0	20,0		Rd44x1/6"	0,390	-0201		-0202		-0203		-0204	
25	72,0	65,0	26,0		Rd52x1/6"	0,530	-0251		-0252		-0253		-0254	
32	77,0	70,0	32,0		Rd58x1/6"	0,625	-0321		-0322		-0323		-0324	
40	82,0	75,0	38,0		Rd65x1/6"	0,770	-0401		-0402		-0403		-0404	
50	93,0	86,0	50,0		Rd78x1/6"	1,030	-0501		-0502		-0503		-0504	
65	105,0	97,0	66,0		Rd95x1/6"	1,880	-0651		-0652		-0653		-0654	
80	115,0	107,0	81,0		Rd110x1/4"	2,700	-0801		-0802		-0803		-0804	
100	130,0	120,0	100,0		Rd130x1/4"	4,020	-1001		-1002		-1003		-1004	

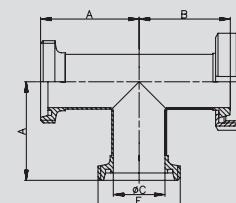
Rd: Rundgewinde
Rd: резьба короткая



T-Stück GGK
тройник РПШ

Art.-Nr. 45650-							AISI 304/304L-1.4301/1.4307				AISI 316L-1.4404			
DN	A	B	C	D	E	Gew.	Art.-Nr.	Preis	Art.-Nr.	Preis	Art.-Nr.	Preis	Art.-Nr.	Preis
mm	mm	mm	mm	mm	mm	kg	poliert	EUR	matt	EUR	poliert	EUR	matt	EUR
10	43,0	39,0	10,0		Rd28x1/8"	0,200	-0101		-0102		-0103		-0104	
15	52,0	48,0	16,0		Rd34x1/8"	0,250	-0151		-0152		-0153		-0154	
20	59,0	53,0	20,0		Rd44x1/6"	0,390	-0201		-0202		-0203		-0204	
25	72,0	65,0	26,0		Rd52x1/6"	0,530	-0251		-0252		-0253		-0254	
32	77,0	70,0	32,0		Rd58x1/6"	0,625	-0321		-0322		-0323		-0324	
40	82,0	75,0	38,0		Rd65x1/6"	0,770	-0401		-0402		-0403		-0404	
50	93,0	86,0	50,0		Rd78x1/6"	1,030	-0501		-0502		-0503		-0504	
65	105,0	97,0	66,0		Rd95x1/6"	1,880	-0651		-0652		-0653		-0654	
80	115,0	107,0	81,0		Rd110x1/4"	2,700	-0801		-0802		-0803		-0804	
100	130,0	120,0	100,0		Rd130x1/4"	4,020	-1001		-1002		-1003		-1004	

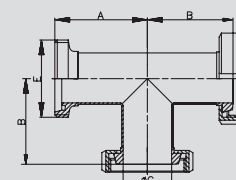
Rd: Rundgewinde
Rd: резьба короткая



T-Stück GGK
тройник РШР

Art.-Nr. 45660-							AISI 304/304L-1.4301/1.4307				AISI 316L-1.4404			
DN	A	B	C	D	E	Gew.	Art.-Nr.	Preis	Art.-Nr.	Preis	Art.-Nr.	Preis	Art.-Nr.	Preis
mm	mm	mm	mm	mm	mm	kg	poliert	EUR	matt	EUR	poliert	EUR	matt	EUR
10	43,0	39,0	10,0		Rd28x1/8"	0,250	-0101		-0102		-0103		-0104	
15	52,0	48,0	16,0		Rd34x1/8"	0,300	-0151		-0152		-0153		-0154	
20	59,0	53,0	20,0		Rd44x1/6"	0,450	-0201		-0202		-0203		-0204	
25	72,0	65,0	26,0		Rd52x1/6"	0,650	-0251		-0252		-0253		-0254	
32	77,0	70,0	32,0		Rd58x1/6"	0,800	-0321		-0322		-0323		-0324	
40	82,0	75,0	38,0		Rd65x1/6"	0,950	-0401		-0402		-0403		-0404	
50	93,0	86,0	50,0		Rd78x1/6"	1,300	-0501		-0502		-0503		-0504	
65	105,0	97,0	66,0		Rd95x1/6"	2,300	-0651		-0652		-0653		-0654	
80	115,0	107,0	81,0		Rd110x1/4"	3,400	-0801		-0802		-0803		-0804	
100	130,0	120,0	100,0		Rd130x1/4"	5,100	-1001		-1002		-1003		-1004	

Rd: Rundgewinde
Rd: резьба короткая



T-Stück GGK
тройник РШШ

1
2
3
4
5
6
7
8
9
10
11

4.10. T-Stück mit Anschlüssen

4.10. тройник подключениями

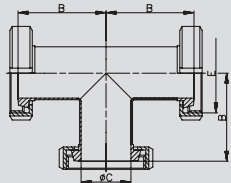
T-Stück KKK

Art.-Nr. 46660-

AISI 304/304L-1.4301/1.4307

AISI 316L-1.4404

тройник ШШШ



DN	A mm	B mm	C mm	D mm	E mm	Gew. kg	Art.-Nr. poliert	Preis EUR	Art.-Nr. matt	Preis EUR	Art.-Nr. poliert	Preis EUR	Art.-Nr. matt	Preis EUR
10		39,0	10,0		Rd28x1/8"	0,300	-0101		-0102		-0103		-0104	
15		48,0	16,0		Rd34x1/8"	0,350	-0151		-0152		-0153		-0154	
20		53,0	20,0		Rd44x1/6"	0,520	-0201		-0202		-0203		-0204	
25		65,0	26,0		Rd52x1/6"	0,830	-0251		-0252		-0253		-0254	
32		70,0	32,0		Rd58x1/6"	0,970	-0321		-0322		-0323		-0324	
40		75,0	38,0		Rd65x1/6"	1,150	-0401		-0402		-0403		-0404	
50		86,0	50,0		Rd78x1/6"	1,569	-0501		-0502		-0503		-0504	
65		97,0	66,0		Rd95x1/6"	2,810	-0651		-0652		-0653		-0654	
80		107,0	81,0		Rd110x1/4"	3,810	-0801		-0802		-0803		-0804	
100		120,0	100,0		Rd130x1/4"	6,010	-1001		-1002		-1003		-1004	

Rd: Rundgewinde
Rd: резьба короткая

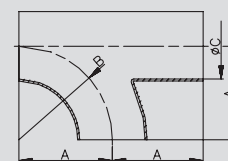
4.11. T-Bogen

4.11. тройник отвод

Art.-Nr. 47200-							AISI 304/304L-1.4301/1.4307				AISI 316L-1.4404			
DN	A	B	C	D	E	Gew.	Art.-Nr.	Preis	Art.-Nr.	Preis	Art.-Nr.	Preis	Art.-Nr.	Preis
mm	mm	mm	mm	mm	mm	kg	poliert	EUR	matt	EUR	poliert	EUR	matt	EUR
15	34,0	35,0	15,0			0,080	-0151		-0152		-0153		-0154	
20	39,0	40,0	19,0			0,090	-0201		-0202		-0203		-0204	
25	49,0	50,0	25,0			0,110	-0251		-0252		-0253		-0254	
32	54,0	55,0	31,0			0,150	-0321		-0322		-0323		-0324	
40	59,0	60,0	37,0			0,190	-0401		-0402		-0403		-0404	
50	69,0	70,0	49,0			0,300	-0501		-0502		-0503		-0504	
65	79,0	80,0	66,0			0,590	-0651		-0652		-0653		-0654	
80	89,0	90,0	81,0			0,810	-0801		-0802		-0803		-0804	
100	99,0	100,0	100,0			1,620	-1001		-1002		-1003		-1004	
125	186,5	187,5	125,0			2,710	-1251		-1252		-1253		-1254	
150	224,0	225,0	150,0			3,880	-1501		-1502		-1503		-1504	

T-Bogen SSS

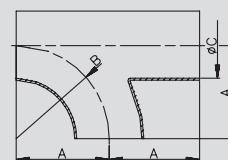
тройник отвод ССС



Art.-Nr. 47201-							AISI 304/304L-1.4301/1.4307				AISI 316L-1.4404			
DN	A	B	C	D	E	Gew.	Art.-Nr.	Preis	Art.-Nr.	Preis	Art.-Nr.	Preis	Art.-Nr.	Preis
mm	mm	mm	mm	mm	mm	kg	poliert	EUR	matt	EUR	poliert	EUR	matt	EUR
1"	26,5	27,5	22,9			0,100	-1001		-1002		-1003		-1004	
1,5"	44,0	45,0	35,1			0,180	-1121		-1122		-1123		-1124	
2"	66,5	67,5	47,8			0,280	-2001		-2002		-2003		-2004	
2,5"	81,5	82,5	60,2			0,530	-2121		-2122		-2123		-2124	
3"	94,0	95,0	72,8			0,720	-3001		-3002		-3003		-3004	
4"	132,5	133,5	97,4			1,510	-4001		-4002		-4003		-4004	

T-Bogen SSS (Zoll)

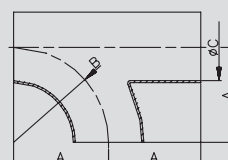
тройник отвод ССС (дюйм)



Art.-Nr. 47220-							AISI 304/304L-1.4301/1.4307				AISI 316L-1.4404			
DN	A	B	C	D	E	Gew.	Art.-Nr.	Preis	Art.-Nr.	Preis	Art.-Nr.	Preis	Art.-Nr.	Preis
mm	mm	mm	mm	mm	mm	kg	poliert	EUR	matt	EUR	poliert	EUR	matt	EUR
15	34,0	35,0	16,0			0,080					-0153		-0154	
20	39,0	40,0	20,0			0,090					-0203		-0204	
25	49,0	50,0	26,0			0,110	-0251		-0252		-0253		-0254	
32	54,0	55,0	32,0			0,150	-0321		-0322		-0323		-0324	
40	59,0	60,0	38,0			0,190	-0401		-0402		-0403		-0404	
50	69,0	70,0	50,0			0,300	-0501		-0502		-0503		-0504	

T-Bogen SSS Reihe 2

тройник отвод ССС ряд 2



Preis auf Anfrage
цена по запросу

4.12. Doppel-T-Bogen

4.12. спаренный тройник отвод

Doppel-T-Bogen SSS

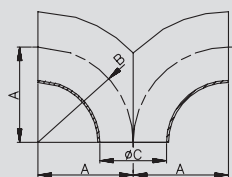
Art.-Nr. 47400-

AISI 304/304L-1.4301/1.4307

AISI 316L-1.4404

тройник отвод ССС

DN	A	B	C	D	E	Gew.	Art.-Nr.	Preis	Art.-Nr.	Preis	Art.-Nr.	Preis	Art.-Nr.	Preis
mm	mm	mm	mm	mm	mm	kg	poliert	EUR	matt	EUR	poliert	EUR	matt	EUR
15	34,0	35,0	15,0			0,080	-0151		-0152		-0153		-0154	
20	39,0	40,0	19,0			0,090	-0201		-0202		-0203		-0204	
25	49,0	50,0	25,0			0,110	-0251		-0252		-0253		-0254	
32	54,0	55,0	31,0			0,150	-0321		-0322		-0323		-0324	
40	59,0	60,0	37,0			0,190	-0401		-0402		-0403		-0404	
50	69,0	70,0	49,0			0,300	-0501		-0502		-0503		-0504	
65	79,0	80,0	66,0			0,590	-0651		-0652		-0653		-0654	
80	89,0	90,0	81,0			0,810	-0801		-0802		-0803		-0804	
100	99,0	100,0	100,0			1,620	-1001		-1002		-1003		-1004	
125	186,5	187,5	125,0			2,710	-1251		-1252		-1253		-1254	
150	224,0	225,0	150,0			3,880	-1501		-1502		-1503		-1504	



Doppel-T-Bogen SSS

(Zoll)

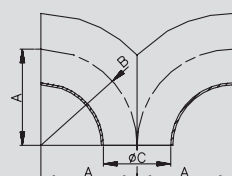
Art.-Nr. 47401-

AISI 304/304L-1.4301/1.4307

AISI 316L-1.4404

тройник отвод ССС (дюйм)

DN	A	B	C	D	E	Gew.	Art.-Nr.	Preis	Art.-Nr.	Preis	Art.-Nr.	Preis	Art.-Nr.	Preis
mm	mm	mm	mm	mm	mm	kg	poliert	EUR	matt	EUR	poliert	EUR	matt	EUR
1"	26,5	27,5	22,9			0,100	-1001		-1002		-1003		-1004	
1,5"	44,0	45,0	35,1			0,180	-1121		-1122		-1123		-1124	
2"	66,5	67,5	47,8			0,280	-2001		-2002		-2003		-2004	
2,5"	81,5	82,5	60,2			0,530	-2121		-2122		-2123		-2124	
3"	94,0	95,0	72,8			0,720	-3001		-3002		-3003		-3004	
4"	132,5	133,5	97,4			1,510	-4001		-4002		-4003		-4004	



Doppel-T-Bogen SSS

Reihe 2

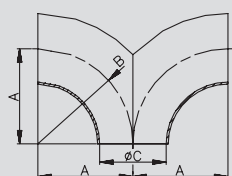
Art.-Nr. 47420-

AISI 304/304L-1.4301/1.4307

AISI 316L-1.4404

тройник отвод ССС ряд 2

DN	A	B	C	D	E	Gew.	Art.-Nr.	Preis	Art.-Nr.	Preis	Art.-Nr.	Preis	Art.-Nr.	Preis
mm	mm	mm	mm	mm	mm	kg	poliert	EUR	matt	EUR	poliert	EUR	matt	EUR
15	34,0	35,0	16,0			0,080					-0153		-0154	
20	39,0	40,0	20,0			0,090					-0203		-0204	
25	49,0	50,0	26,0			0,110	-0251		-0252		-0253		-0254	
32	54,0	55,0	32,0			0,150	-0321		-0322		-0323		-0324	
40	59,0	60,0	38,0			0,190	-0401		-0402		-0403		-0404	
50	69,0	70,0	50,0			0,300	-0501		-0502		-0503		-0504	



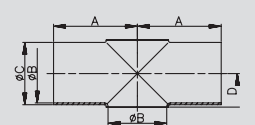
Preis auf Anfrage
цена по запросу

4.13. Kreuzstück kurz

4.13. крестовина короткая

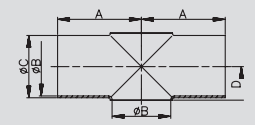
Art.-Nr. 47600-							AISI 304/304L-1.4301/1.4307				AISI 316L-1.4404			
DN	A	B	C	D	E	Gew.	Art.-Nr.	Preis	Art.-Nr.	Preis	Art.-Nr.	Preis	Art.-Nr.	Preis
mm	mm	mm	mm	mm	mm	kg	poliert	EUR	matt	EUR	poliert	EUR	matt	EUR
15	35,0	15,0	18,0	10,0		0,060	-0151		-0152		-0153		-0154	
20	40,0	19,0	22,0	12,0		0,070	-0201		-0202		-0203		-0204	
25	50,0	25,0	28,0	15,5		0,090	-0251		-0252		-0253		-0254	
32	55,0	31,0	34,0	18,5		0,130	-0321		-0322		-0323		-0324	
40	60,0	37,0	40,0	21,5		0,150	-0401		-0402		-0403		-0404	
50	70,0	49,0	52,0	28,0		0,240	-0501		-0502		-0503		-0504	
65	80,0	66,0	70,0	40,0		0,490	-0651		-0652		-0653		-0654	
80	90,0	81,0	85,0	45,5		0,640	-0801		-0802		-0803		-0804	
100	100,0	100,0	104,0	58,0		0,910	-1001		-1002		-1003		-1004	
125	187,5	125,0	129,0	71,5		1,970	-1251		-1252		-1253		-1254	
150	225,0	150,0	154,0	87,0		2,890	-1501		-1502		-1503		-1504	

Kreuzstück SSSS kurz
крестовина СССС короткий



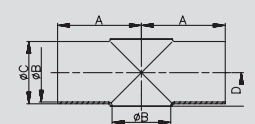
Art.-Nr. 47601-							AISI 304/304L-1.4301/1.4307				AISI 316L-1.4404			
DN	A	B	C	D	E	Gew.	Art.-Nr.	Preis	Art.-Nr.	Preis	Art.-Nr.	Preis	Art.-Nr.	Preis
mm	mm	mm	mm	mm	mm	kg	poliert	EUR	matt	EUR	poliert	EUR	matt	EUR
1"	50,0	22,9	25,4	14,0		0,060	-1001		-1002		-1003		-1004	
1,5"	60,0	35,1	38,1	20,0		0,140	-1121		-1122		-1123		-1124	
2"	70,0	47,8	50,8	27,5		0,230	-2001		-2002		-2003		-2004	
2,5"	80,0	60,2	63,5	36,0		0,340	-2121		-2122		-2123		-2124	
3"	90,0	72,8	76,1	44,0		0,620	-3001		-3002		-3003		-3004	
4"	100,0	97,4	101,6	56,0		0,890	-4001		-4002		-4003		-4004	

Kreuzstück SSSS kurz (Zoll)
крестовина СССС короткий (дюйм)



Art.-Nr. 47620-							AISI 304/304L-1.4301/1.4307				AISI 316L-1.4404			
DN	A	B	C	D	E	Gew.	Art.-Nr.	Preis	Art.-Nr.	Preis	Art.-Nr.	Preis	Art.-Nr.	Preis
mm	mm	mm	mm	mm	mm	kg	poliert	EUR	matt	EUR	poliert	EUR	matt	EUR
15	35,0	16,0	19,0	11,0		0,060	-0151		-0152		-0153		-0154	
20	40,0	20,0	23,0	13,0		0,070	-0201		-0202		-0203		-0204	
25	50,0	26,0	29,0	16,5		0,090	-0251		-0252		-0253		-0254	
32	55,0	32,0	35,0	19,0		0,130	-0321		-0322		-0323		-0324	
40	60,0	38,0	41,0	22,5		0,150	-0401		-0402		-0403		-0404	
50	70,0	50,0	53,0	29,5		0,240	-0501		-0502		-0503		-0504	

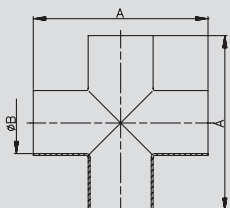
Kreuzstück SSSS kurz Reihe2
крестовина СССС короткий Ряд 2



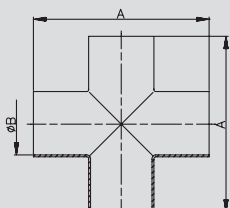
4.14. Kreuzstück lang

4.14. крестовина длинная

Kreuzstück SSSS lang		Art.-Nr. 47800-						AISI 304/304L-1.4301/1.4307				AISI 316L-1.4404				
DN	A	B	C	D	E	Gew.	Art.-Nr.	Preis	Art.-Nr.	Preis	Art.-Nr.	Preis	Art.-Nr.	Preis	Art.-Nr.	Preis
15	70,0	15,0				0,065	-0151		-0152				-0153			-0154
20	80,0	19,0				0,100	-0201		-0202				-0203			-0204
25	100,0	25,0				0,110	-0251		-0252				-0253			-0254
32	110,0	31,0				0,150	-0321		-0322				-0323			-0324
40	120,0	37,0				0,170	-0401		-0402				-0403			-0404
50	140,0	49,0				0,255	-0501		-0502				-0503			-0504
65	160,0	66,0				0,725	-0651		-0652				-0653			-0654
80	180,0	81,0				1,130	-0801		-0802				-0803			-0804
100	200,0	100,0				2,150	-1001		-1002				-1003			-1004
125	375,0	125,0				3,450	-1251		-1252				-1253			-1254
150	450,0	150,0				4,870	-1501		-1502				-1503			-1504



Kreuzstück SSSS lang (Zoll)		Art.-Nr. 47801-						AISI 304/304L-1.4301/1.4307				AISI 316L-1.4404				
DN	A	B	C	D	E	Gew.	Art.-Nr.	Preis	Art.-Nr.	Preis	Art.-Nr.	Preis	Art.-Nr.	Preis	Art.-Nr.	Preis
1"	100,0	22,9				0,100	-1001		-1002				-1003			-1004
1,5"	120,0	35,1				0,180	-1121		-1122				-1123			-1124
2"	140,0	47,8				0,350	-2001		-2002				-2003			-2004
2,5"	160,0	60,2				0,450	-2121		-2122				-2123			-2124
3"	180,0	72,8				0,570	-3001		-3002				-3003			-3004
4"	200,0	97,4				1,100	-4001		-4002				-4003			-4004



Kreuzstück SSSS lang Reihe2		Art.-Nr. 47820-						AISI 304/304L-1.4301/1.4307				AISI 316L-1.4404				
DN	A	B	C	D	E	Gew.	Art.-Nr.	Preis	Art.-Nr.	Preis	Art.-Nr.	Preis	Art.-Nr.	Preis	Art.-Nr.	Preis
15	70,0	16,0				0,065	-0151		-0152				-0153			-0154
20	80,0	20,0				0,100	-0201		-0202				-0203			-0204
25	100,0	26,0				0,110	-0251		-0252				-0253			-0254
32	110,0	32,0				0,150	-0321		-0322				-0323			-0324
40	120,0	38,0				0,170	-0401		-0402				-0403			-0404
50	140,0	50,0				0,255	-0501		-0502				-0503			-0504

